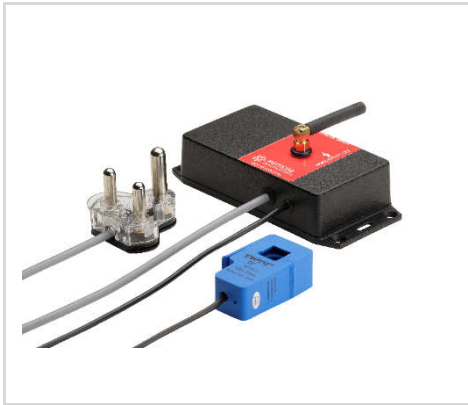


AC SUPPLIED WIRELESS AC CURRENT METER SENSOR WITH EXTERNAL ANTENNA AND EXTERNAL CT SENSOR



INFORMATION

Format	AC Powered
Frequency	868 MHz

Xemote wireless AC Current Meters measure the RMS current of an alternating current (AC) system using a current transformer (CT) that wraps around the "hot" wire of a two wire (hot, common, ground(optional)) power system. The sensor reports Minimum RMS current, maximum RMS current, average RMS current, and amp hours to the Xemote web portal. The Xemote portal system can generate watt hour or kilowatt hour readings as well.

HIGHLIGHTS

- Up to 128 sensors connected to a single gateway
- ISM band wireless
- Critical Data Recovery (CDR) feature, 21 days at 10 min
- Non-intrusive installation

APPLICATIONS

- Current Monitoring
- Current Usage
- Amp Hour Meter
- Watt/Kilowatt Hour Meter
- Equipment On/Off status

SENSOR SPECIFICATIONS

AC Current Meter

Absolute Max CT Current	100 A
Dielectric Strength	1000 Vac for 1 minute
Fire Resistance	UL94 – Vo
Measurement Resolution	12 Bits
Non – Linearity of sensor	± 3% (10% -120% of the rated input current range)
CT Sensor loom length	900mm
Other	Other CT sensor options are available 5A, 10A,15A, 20A, 25A, 30A, 50A and 60A

Power Supply

Supply Type	AC
Supply Voltage	80-264 Vac 50/60 Hz
Supply Backup	At least 8 hours

Wireless

Frequency	868 MHz Operating Frequency
Range	Up to 200 m non-line-of-sight device range (actual range may vary depending on environment). Longer ranges available with GSM Gateway 868Mhz outdoor Omni antenna 6dB gain. (Typically, 300 m plus)
Security	Encrypted
Certifications	ETSI EN 300 220-2 V2.4.1 (2012-05)

For more information about our products, please contact our sales department.

Visit our website at www.xemote.co.za | sales@xemote.co.za

Copyright © 2019 Xemote (Pty) Ltd. All Rights Reserved.

Rev 1.0.0

AC SUPPLIED WIRELESS AC CURRENT METER SENSOR WITH EXTERNAL ANTENNA AND EXTERNAL CT SENSOR



Internal I/O	Internal
Bidirectional IO Ports	2x Internal Input/output
Logic Level	3.3 V
Drive Current	20 mA Max
Mechanical	
Dimensions	115 mm x 64 mm x 31 mm 138 mm x 64 mm x 31 mm – Including flanges
Weight	245g including antenna
Material	ABS Plastic
Mounting Options	Wall mount flanges, button magnet, Velcro strips, double sided tape
IP Rating	IP54 (protection against the access of dust and splashing water)
Environmental	
Max Operating Temperature	-25 °C to +70 °C
Warranty Terms	
Period	12 months

ORDERING INFORMATION

Part Number	Details	Configuration
XEMT4-20123	Sensor, Current Transformer (CT), SMA	Supplied with 900mm length CT cable. Longer lengths available on request.
5A, 10A,15A, 20A, 25A, 30A, 50A, and 60A	CT options	

Product images are for illustrative purposes only and may differ from the actual product.

Specifications are subject to change without notice.

For more information about our products, please contact our sales department.

Visit our website at www.xemote.co.za | sales@xemote.co.za

Copyright © 2019 Xemote (Pty) Ltd. All Rights Reserved.

Rev 1.0.0